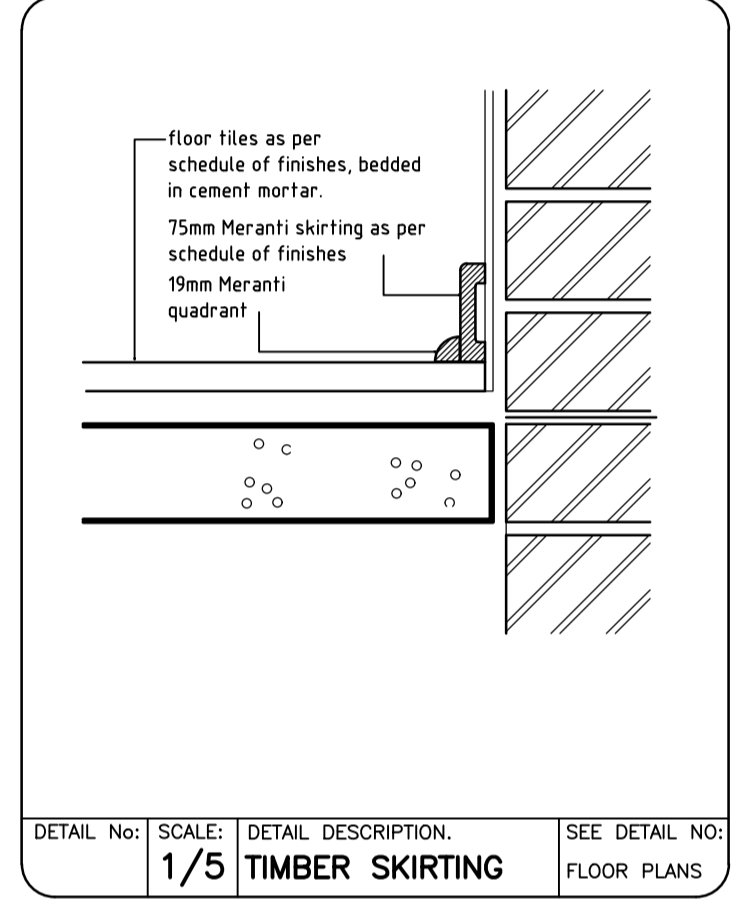
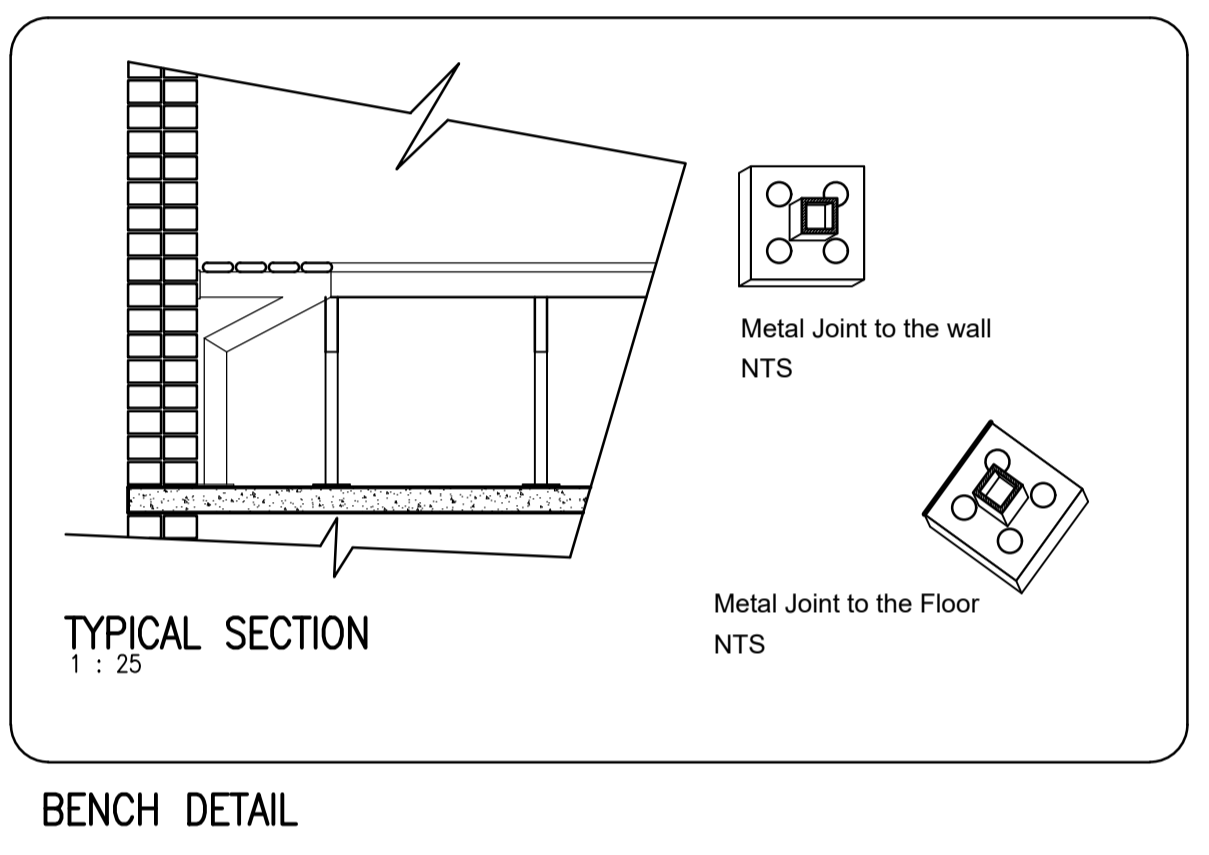
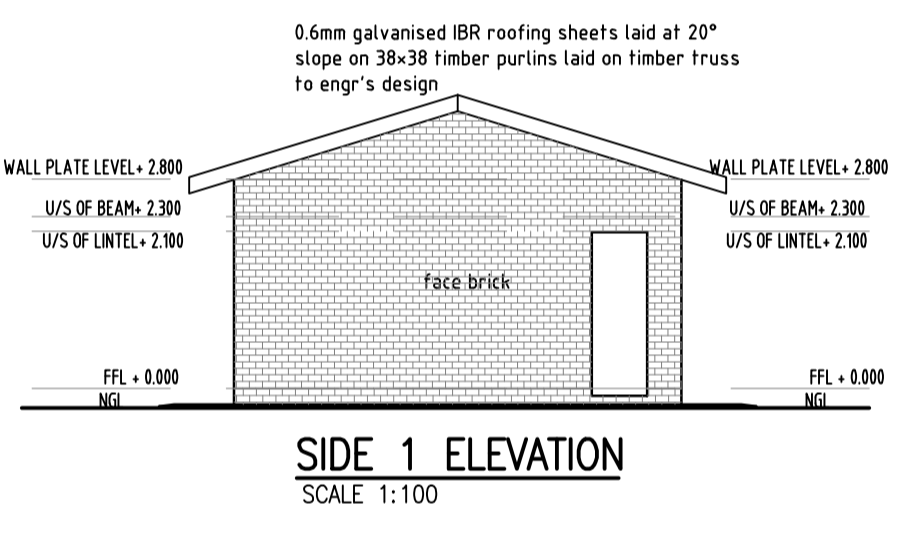
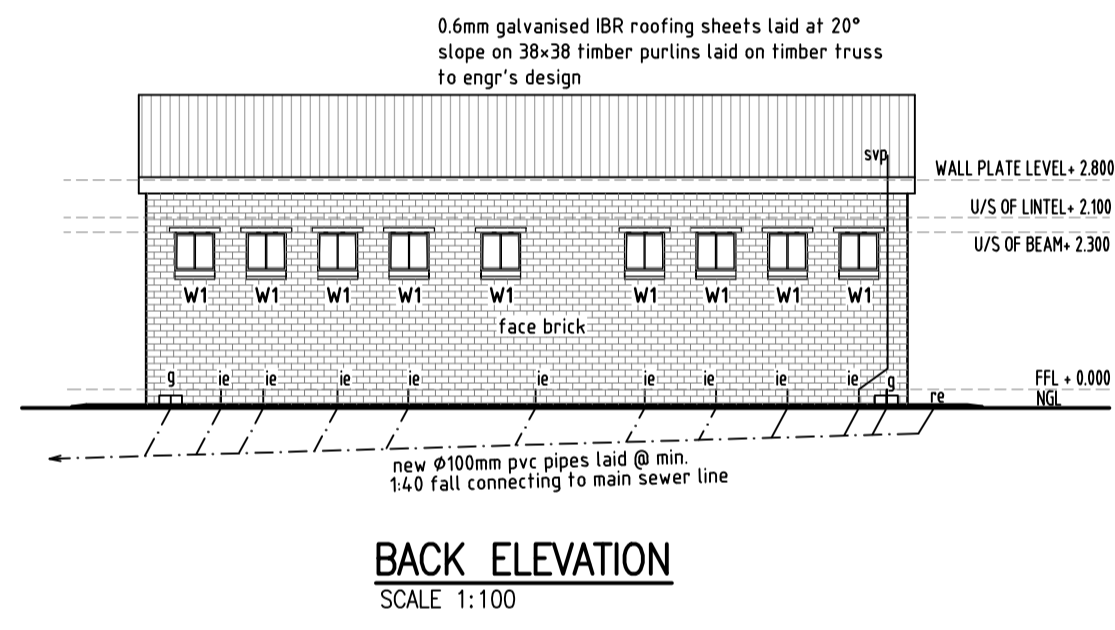
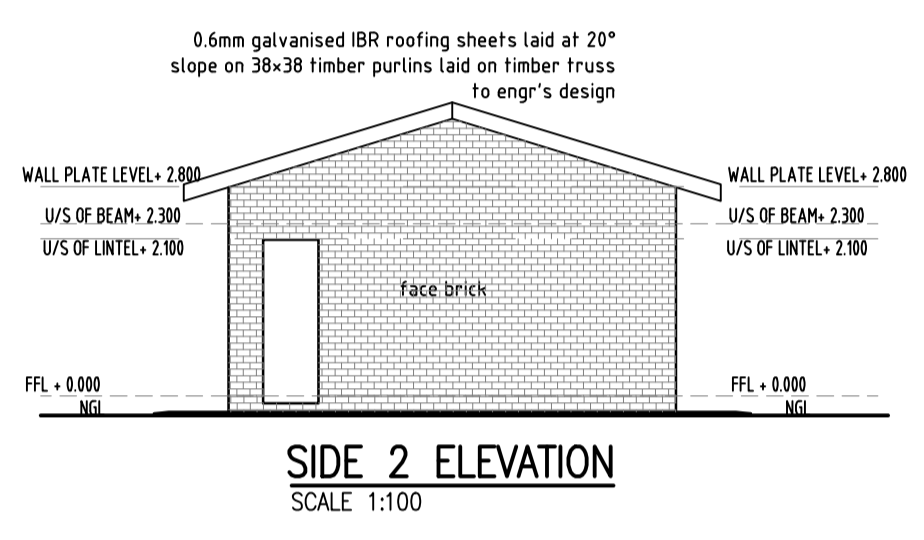
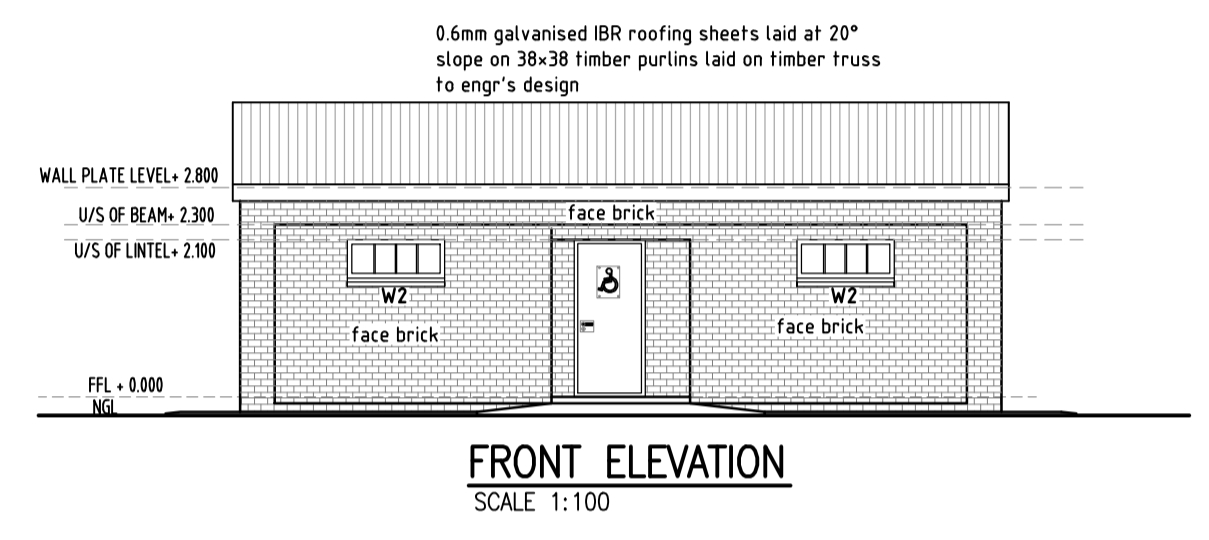
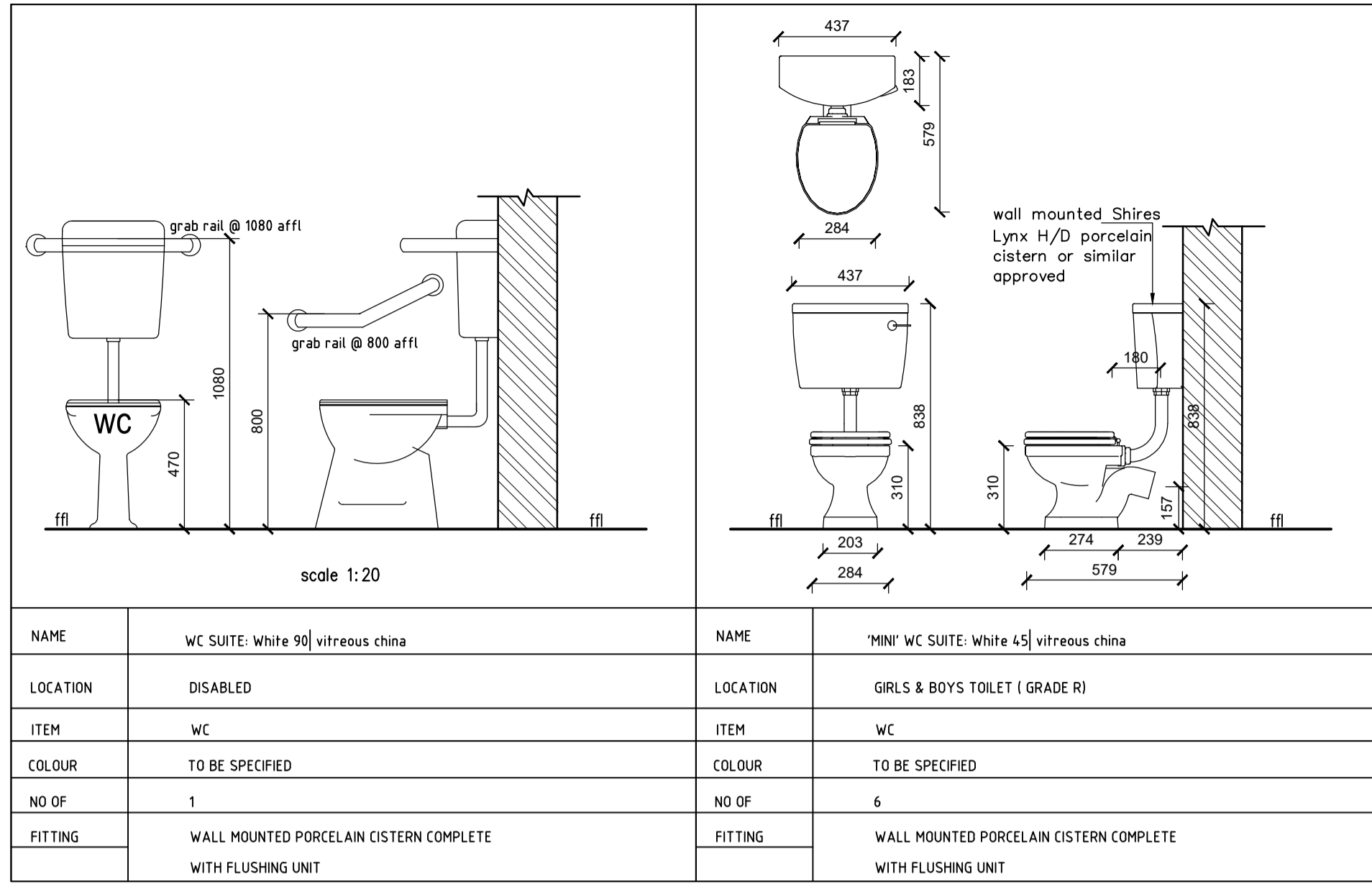
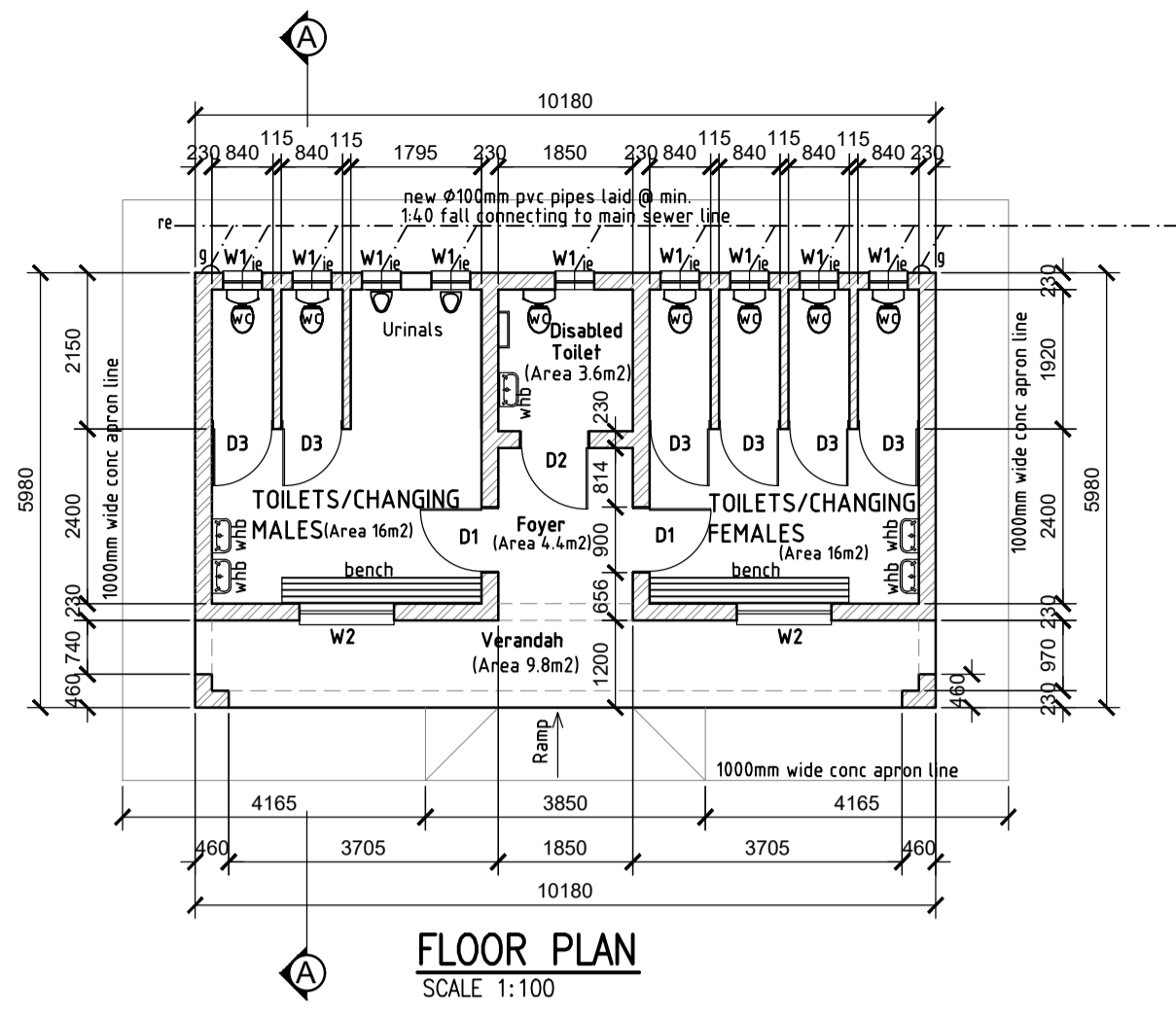


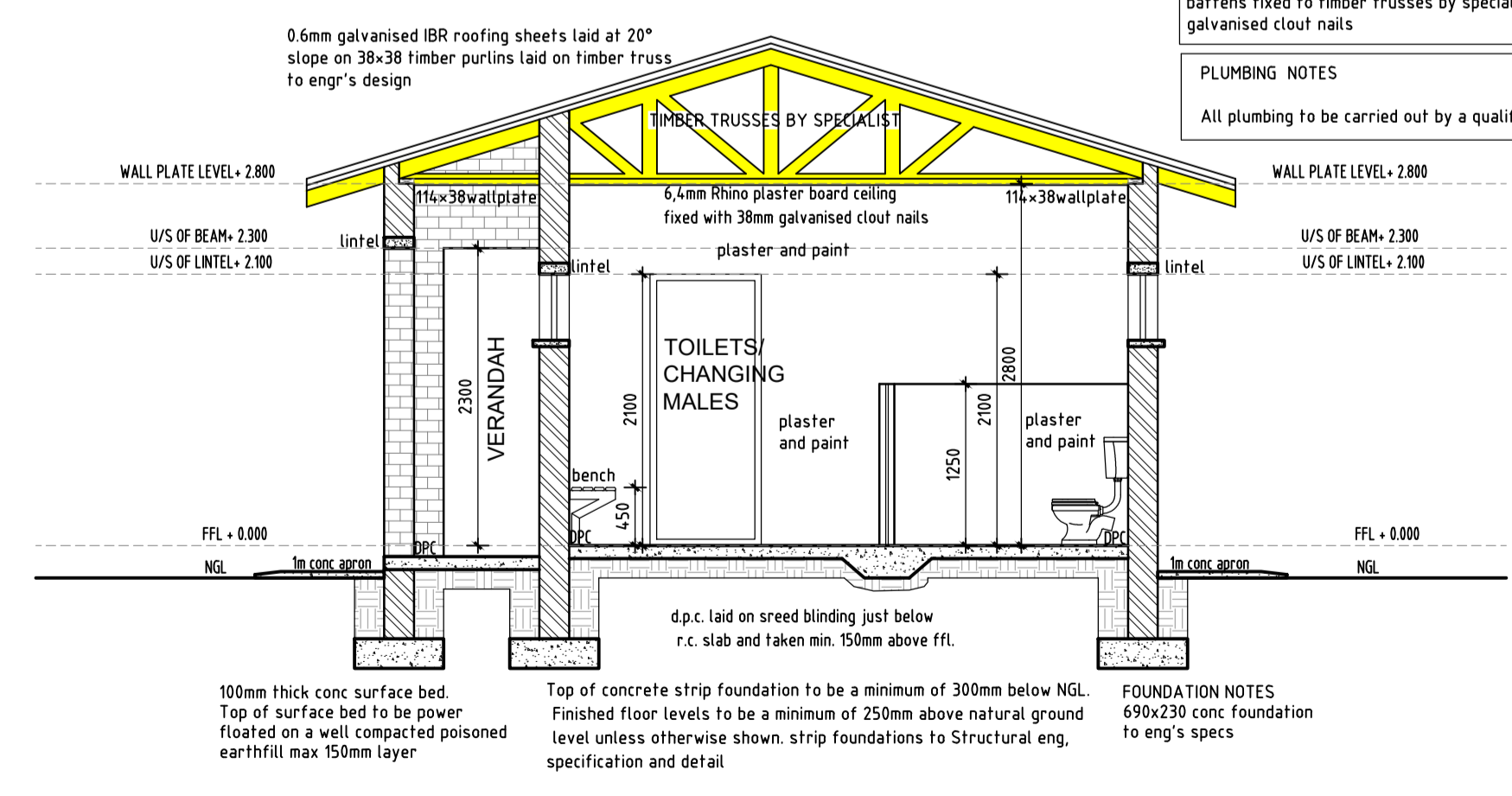
NOTES:



ROOF NOTES
0.6mm galvanised IBR roofing sheets laid at 20° slope on 38x38 timber purlins laid on timber truss to eng'r's design

CEILING NOTES
6.4 Rhino plasterboard ceiling fixed to 50 x50 timber battens fixed to timber trusses by specialists with 38 galvanised clout nails

PLUMBING NOTES
All plumbing to be carried out by a qualified plumber



WINDOW SCHEDULE

WINDOW viewed externally	W1		W2	
	533	511	1302	511
No. OFF	9		2	
TOTAL	9		2	
SIZE	533mm x 511mm		1302mm x 511mm	
CATALOGUE REF.	SS21		SS41	
FRAME	Cottage Section std. Steel Window Frame		Cottage Section std. Steel Window Frame	
GLAZING	3mm thick Frosted Glass fixed into frame with std putty		3mm thick Frosted Glass fixed into frame with std putty	
FITTINGS	Approved standard chrome plated fittings to suite opening sashes.		Approved standard chrome plated fittings to suite opening sashes.	
BURGLAR BARS	20mm wide x 4mm thick MS flat bar welded to frame		20mm wide x 4mm thick MS flat bar welded to frame	
FINISH	1 x coat Primer with approved 2 x coat enamel paint finish		1 x coat Primer with approved 2 x coat enamel paint finish	

DOOR SCHEDULE

DOOR viewed externally	D3		D1		D2	
	762	1095	900	2100	950	2100
No. OFF	6		2		1	
TOTAL	6		2		1	
SIZE	762mm x 1095mm		900mm x 2100mm		950mm x 2100mm	
FRAME	32mm thick x 56mm deep PAR rebated side frames fixed to nib walls		Steel frame for 110mm internal wall		Steel frame for 110mm internal wall	
FRAME FINISH	1 x coat primer & 1 x coat approved enamel paint		1 x coat primer & 1 x coat approved enamel paint		1 x coat primer & 1 x coat approved enamel paint	
DOOR	762mm x 1095mm x 40mm hollow core door with hardboard both sides on return spring on swing hinges		900mm x 2100mm x 40mm solid flush panel door with hardboard both sides		950mm x 2100mm x 40mm solid flush panel door with hardboard both sides	
DOOR FINISH	1 x coat primer & 1 x coat approved PVA paint		1 x coat primer & 1 x coat approved PVA paint		1 x coat primer & 1 x coat approved PVA paint	
FURNITURE	N/A		Door set 3 with door sign		Door set 3 with door sign	

REV No	DATE	DESCRIPTION
C	2011-04-12	REVISED DT56 & DT35
B	2010-10-12	DID TITLE BLOCK: -DT56 REVISED CATCH PVT -DT35 REVISED CATCH PVT
A	2010-08-10	REDESIGN

REVISIONS
SIZE: 300mm x 450mm x 100mm

DEPARTMENT OF INFRASTRUCTURE DEVELOPMENT

INSTITUTION
GAUTENG DEPARTMENT of EDUCATION

SERVICE
GENERIC ABULATIONS

CONTRACT - SECTION

DISCIPLINE
ARCHITECTURAL

WORK DESCRIPTION - SUB DIVISION
WORKING DRAWING

DRAWING DESCRIPTION
STAFF TOILETS FLOOR PLAN, SECTIONS, ELEVATIONS AND DETAILS

FILE No.	ITEM No.
DESIGN	DRAWN
SCALE	CHECKED

RESPONSIBLE PROFESSIONAL
DATE NAME SIGNATURE PR NUMBER

DRAWING CO-ORDINATED

CONSULTANT:
DNMZ CONSORTIUM

CONTRACTOR:

CADD SYSTEM	AUTO CAD	026-DT53-58_266-REV-C	FILE NAME
SIZE	DRAWING NUMBER	REV	
A1	A/507-001	FLOOR PLAN	0